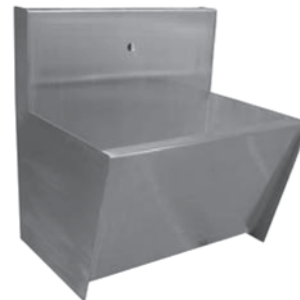


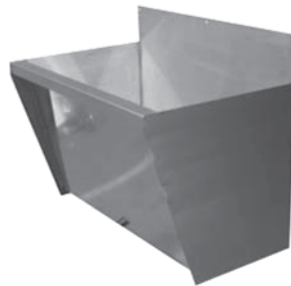
Scrub-up Troughs are manufactured in accordance with HTM64, from 1.2mm thick grade 304, satin polished stainless steel, supplied with brackets and 38mm plastic grated waste (in a left, right or central position). Available in any length, up to 3000mm, allowing approximately 600mm per person.



H37 - Taplanding Scrub-up Trough
480mm wide x 350mm deep



H38 - Splashback Scrub-up Trough
465mm wide x 350mm deep
with 250mm splashback



H39 - Standard Scrub-up Trough
440mm wide x 350mm deep

Hospital Sinks

Manufactured in accordance with HTM64, from 1.2mm thick grade 304, satin polished stainless steel, supplied with anti-drip edges, brackets and 38mm standpipe strainer waste and plug. Plaster sinks also have a sump containing a pull-out basket and cover is fitted to the bowl. Tapholes as required. Standard overall size and layout can be altered and alternative bowl sizes are available. They can also be supplied as sit-on or inset tops.



H3601 - Single Hospital Sink 600x600mm
H3602 - Double Hospital Sink 1200x600mm



H3301 - Plaster Sink (without drainer) 600x600mm
H3301 - Plaster Sink (with drainer) 1200x600mm

Optional Extras

- L1799** - Stainless steel leg supports
- T9202** - Quarter turn 75mm lever sink taps
- T9203** - Quarter turn 75mm lever sink deck mixer
- T9204** - Quarter turn 75mm lever bib taps

- T9212** - Quarter turn 150mm lever sink taps
- T9213** - Quarter turn 150mm lever sink deck mixer
- T9214** - Quarter turn 150mm lever bib taps

Slop Hoppers are manufactured in accordance with HTM64, from 1.2mm thick grade 304, satin polished stainless steel, supplied with anti-drip edges, brackets, top or back inlet 38mm flushpipe connection, 110mm spigot soil outlet and 38mm combined waste and overflow assembly. Alternative sizes available on request.



H3001 - Combined Sink/Slop Hopper (top inlet)
H3002 - Combined Sink/Slop Hopper (back inlet)
1600x600mm



H3101 - Combined Slop Hopper/Drainer (top inlet)
H3102 - Combined Slop Hopper/Drainer (back inlet)
1000x600mm



H3201 - Wall Mounted Slop Hopper (top inlet)
H3202 - Wall Mounted Slop Hopper (back inlet)
600x600mm



H3401 - Floor Standing Slop Hopper (top inlet)
H3402 - Floor Standing Slop Hopper (back inlet)
600x600x600mm high

Optional Extras



T9203 - Quarter turn 75mm
lever sink deck mixer



T9202 - Quarter turn
75mm lever sink taps



T9212 - Quarter turn
150mm lever sink taps

L1799 - Stainless steel leg supports

B1001 - Bucket grating

T3994 - 110mm stainless steel pushfit P trap

T3995 - 110mm plastic pushfit P trap

C1196 - St/steel h/l cistern & flushpipe

G1000 - Outlet Grating

T9204 - Quarter turn 75mm lever bib taps

T9213 - Quarter turn 150mm lever sink deck mixer

T9214 - Quarter turn 150mm lever bib taps