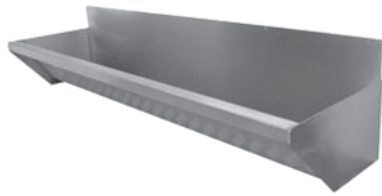


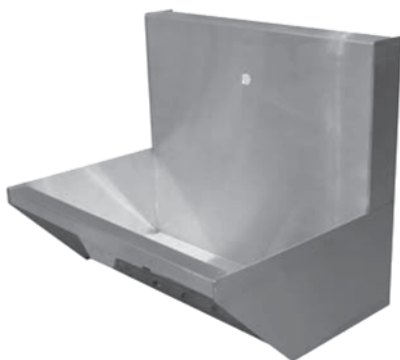
Manufactured from 1.2mm thick grade 304, satin polished stainless steel, supplied with brackets and 38mm plastic grated waste (in a left, right or central position). Available in any length, up to 3000mm, allowing approximately 600mm per person.



**W13** - Contract Washtrough  
315mm wide x 200mm deep



**W14** - Taplanding Washtrough  
370mm wide x 200mm deep



**W15** - Splashback Washtrough  
355mm wide x 200mm deep  
with 300mm splashback



**W16** - Island Washtrough  
740mm wide x 900mm high

## Optional Extras



**S9401** - Swan-neck spout



**S9401** - Knee-operated valve  
frame-mounted, non-convulsive



**T9622** - Thermostatic valve 22mm



**S9402** - Bib spout



**F9304** - Foot-operated valve  
non-convulsive



**K9401** - Knee-operated valve  
wall-mounted, 20 second timed delay

**S17** - Loose splashback 300mm high

**L1799** - Stainless steel leg supports